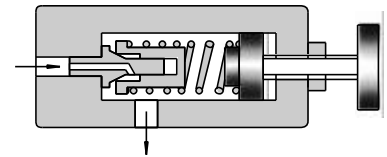




■ Specifications

Model Numbers		Max. Operating Pressure MPa (PSI)	Pres. Adj. Range MPa (PSI)	Max. Flow L/min (U.S.GPM)	Approx. Mass kg (lbs.)	
Threaded Connections	Sub-plate Mounting				DT type	DG type
DT-02-* -22 *	DG-02-* -22*	21 (3050)	Note)	16 (4.22)	1.5 (3.3)	1.5 (3.3)

Note: Refer to the Model Number Designation.

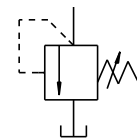


■ Model Number Designation

F-	D	T	-02	-B	-22	*
Special Seals	Series Number	Type of Mounting	Valve Size	Pres. Adj. Range MPa (PSI)	Design Number	Design Standards
F: Special Seals for Phosphate Ester Type Fluids (Omit if not required)	D: Direct Type Relief Valves	T: Threaded Connection G: Sub-plate Mounting	02	B: ★-7 (★ -1020) C: 3.5-14 (510-2030) H: 7-21 (1020-3050)	22 22	N Japanese Std. "JIS" 90: European Design Std. 90: N. American Design Std. N Japanese Std. "JIS" and one: European Design Std. 90: N. American Design Std.

★ Refer to the Minimum Adjustment Pressure Characteristics.

Graphic Symbol



■ Attachment

● Mounting bolts

Valve Model Numbers	Socket Head Cap Screw		Qty.
	Japanese Std. "JIS" and European Design Std.	N. American Design Std.	
DG-02	M5 × 45 Lg.	No.10-24UNC × 1-3/4 Lg.	4

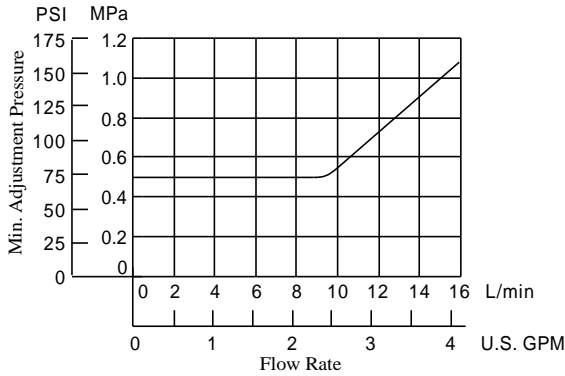
■ Sub-plate

Valve Model Numbers	Japanese Standard "JIS"		European Design Standard		N. American Design Standard		Approx. Mass kg (lbs.)
	Sub-plate Model Numbers	Thread Size	Sub-plate Model Numbers	Thread Size	Sub-plate Model Numbers	Thread Size	
DG-02	DGM-02-20	Rc 1/4	DGM-02-2080	1/4 BSP.F	DGM-02-2090	1/4 NPT	0.7 (1.5)

• Sub-plates are available. Specify the sub-plate model number from the table above. When sub-plates are not used, the mounting surface should have a good machined finish.

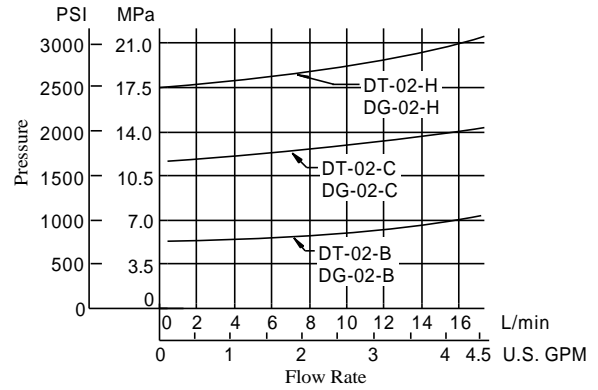
• The sub-plates are those for remote control relief valves. For dimensions, see page 4.

Min. Adjustment Pressure

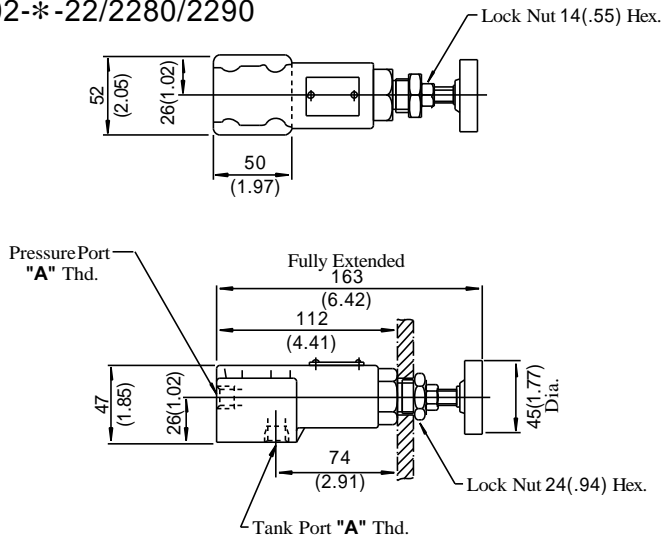


Nominal Override Characteristics

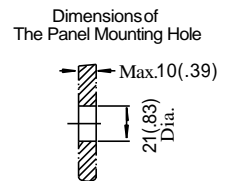
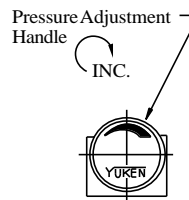
Hydraulic fluid: Viscosity : 35 mm²/s (164 SSU)
Specific Gravity : 0.850



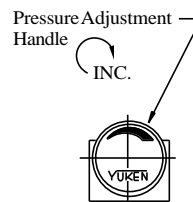
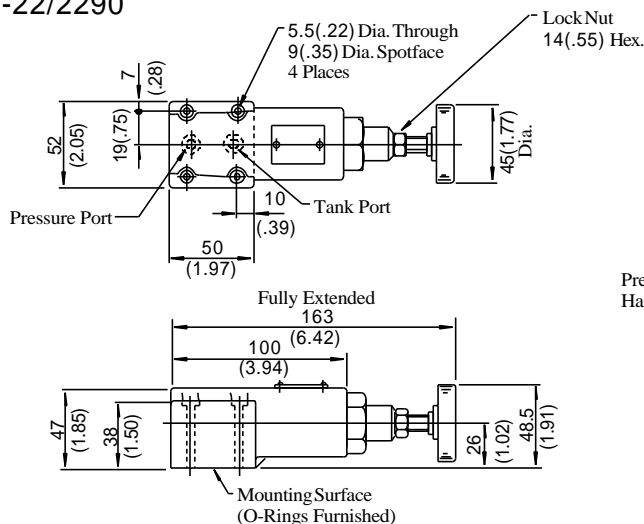
DT-02-*-22/2280/2290



Model Numbers	"A" Thd.
DT-02-*-22	Rc 1/4
DT-02-*-	1/4BSP.F
2280	1/4 NPT



DG-02-*-22/2290



**DIMENSIONS IN
MILLIMETRES (INCHES)**

Note: For dimensions of the valve mounting surface, see the dimensional drawing (P.4) of the sub-plate used together.