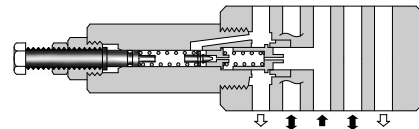


Specifications / Others

■ Specifications

Model Numbers	Max. Operating Pressure MPa (PSI)	Max. Flow L/min (U.S.GPM)
MBP-03-* -30/3090 MBA-03-* -30/3090 MBB-03-* -30/3090 MBW-03-* -30/3090	31.5 (4570)	70 (18.5)



■ Model Number Designation

F-	MBA	-03	-B	-30	*
Special Seals	Series Number	Valve Size	Pres. Adj. Range MPa (PSI)	Design Number	Design Standard
F: Special Seals for Phosphate Ester Type Fluids (Omit if not required)	MBP : Relief Valve for P-Line MBA : Relief Valve for A-Line MBB : Relief Valve for B-Line MBW : Relief Valve for A&B-Lines	03	B : *-7 *1 (*-1020) H : 3.5-25 (510-3630)	30	Refer to ★2

- ★ 1. See the "Minimum Adjustment Pressure" of the next page for the item marked *.
- ★ 2. Design Standards: None Japanese Standard "JIS" and European Design Standard 90 N. American Design Standard

■ Instructions

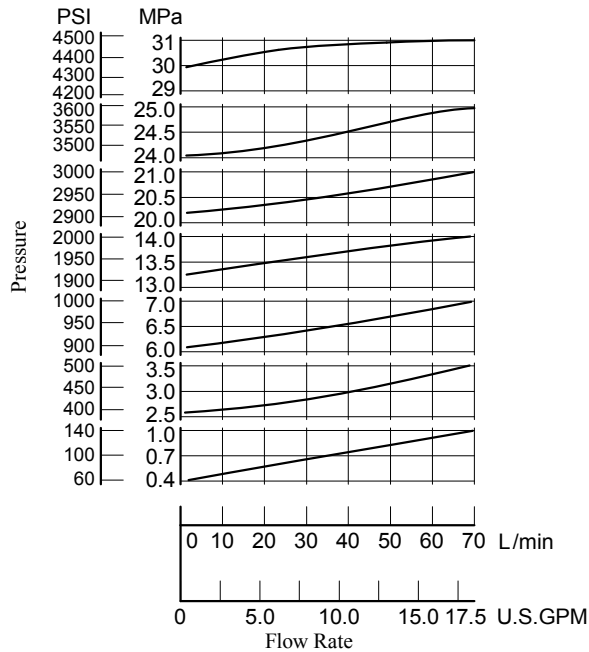
- The minimum adjustment pressure equals the value obtained from the minimum adjustment pressure characteristics plus the tank line back pressure of the next page. This back pressure should include the value of the T-line pressure drop characteristics of the valves stacked to the base plate side of the modular valve.
- To make pressure adjustment, loosen the lock nut and turn the pressure adjustment screw clockwise or anti-clockwise. For an increase of pressure, turn the screw clockwise. Be sure to re-tighten the lock nut firmly after making adjustment to the pressure.
- In case of a small flow, the setting pressure may become unstable. To avoid this, refer to the minimum flow characteristic curve of the next page and use the valve within a range as shown with .

Model Numbers	Graphic Symbols	Detailed Graphic Symbols
MBP-03		
MBA-03		
MBB-03		
MBW-03		

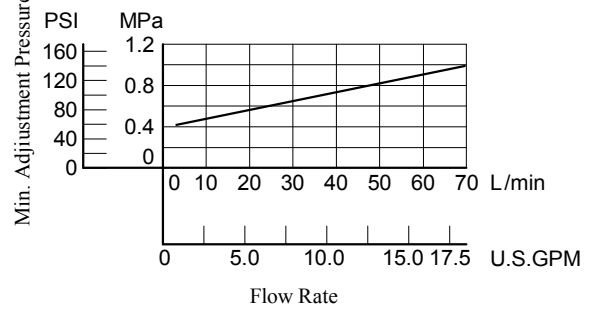


Hydraulic Fluid: Viscosity 35 mm²/s (164 SSU), Specific Gravity 0.850

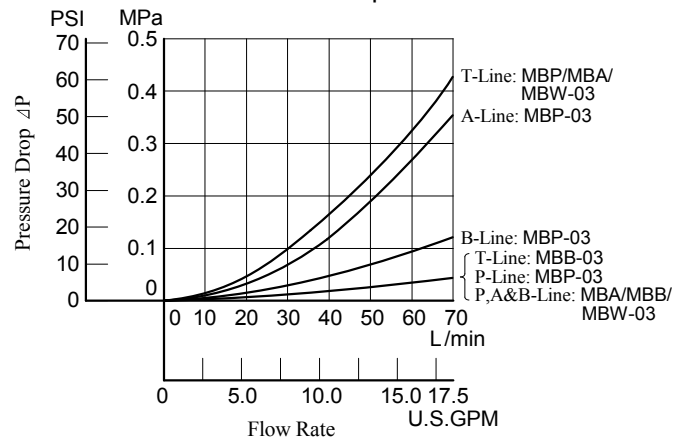
Nominal Override Characteristics



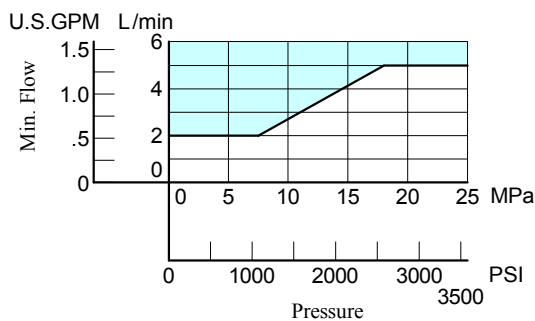
Min. Adjustment Pressure



Pressure Drop

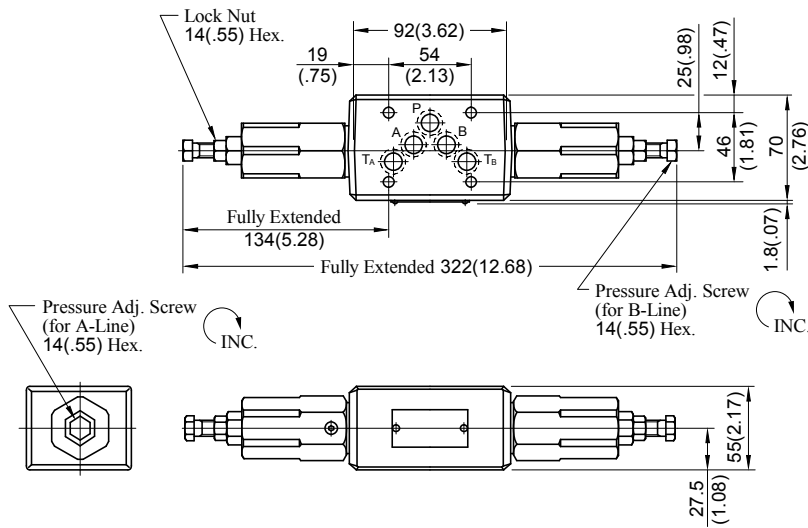


Min. Flow vs. Adjustment Pressure



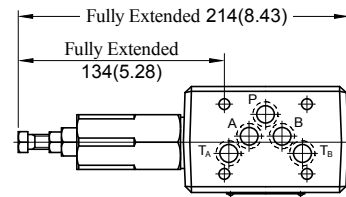
MBW-03-* -30/3090

DIMENSIONS IN
MILLIMETRES (INCHES)



Approx. Mass..... 4.2 kg (9.3 lbs.)

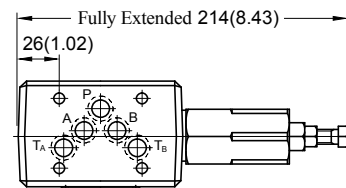
MBP-03-* -30/3090
MBA-03-* -30/3090



Approx. Mass..... 3.5 kg (7.7 lbs.)

• For other dimensions, refer to "MBW-03" drawing left.

MBB-03-* -30/3090



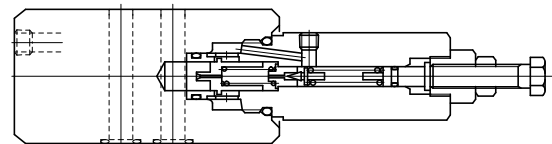
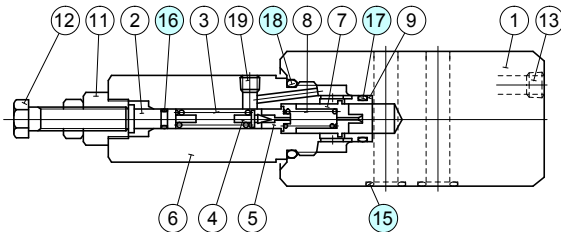
Approx. Mass..... 3.5 kg (7.7 lbs.)

• For other dimensions, refer to "MBW-03" drawing left.

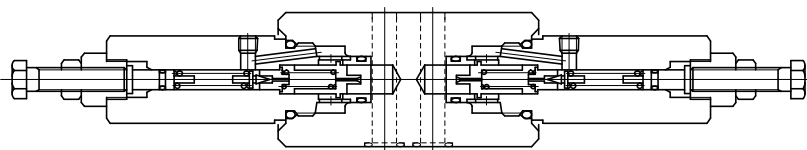
■ Spare Parts List

MBP-03-* -30/3090
MBA-03-* -30/3090

MBB-03-* -30/3090



MBW-03-* -30/3090



● List of Seals

Item	Name of Parts	Part Numbers	Quantity			
			MBP-03	MBA-03	MBB-03	MBW-03
15	O-Ring	SO-NB-A014	5	5	5	5
16	O-Ring	SO-NA-P6	1	1	1	2
17	O-Ring	SO-NB-P16	1	1	1	2
18	O-Ring	SO-NB-P26	1	1	1	2

Note: When ordering seals, please specify the seal kit number from the table right.

● List of Seal Kits

Model Numbers	Seal kit Numbers
MBP-03	KS-MBP-03-30
MBA-03	
MBB-03	
MBW-03	KS-MBW-03-30

⚠ CAUTION

When making replacement of seals, please do it carefully after reading through the relevant instructions in the Operator's Manual.